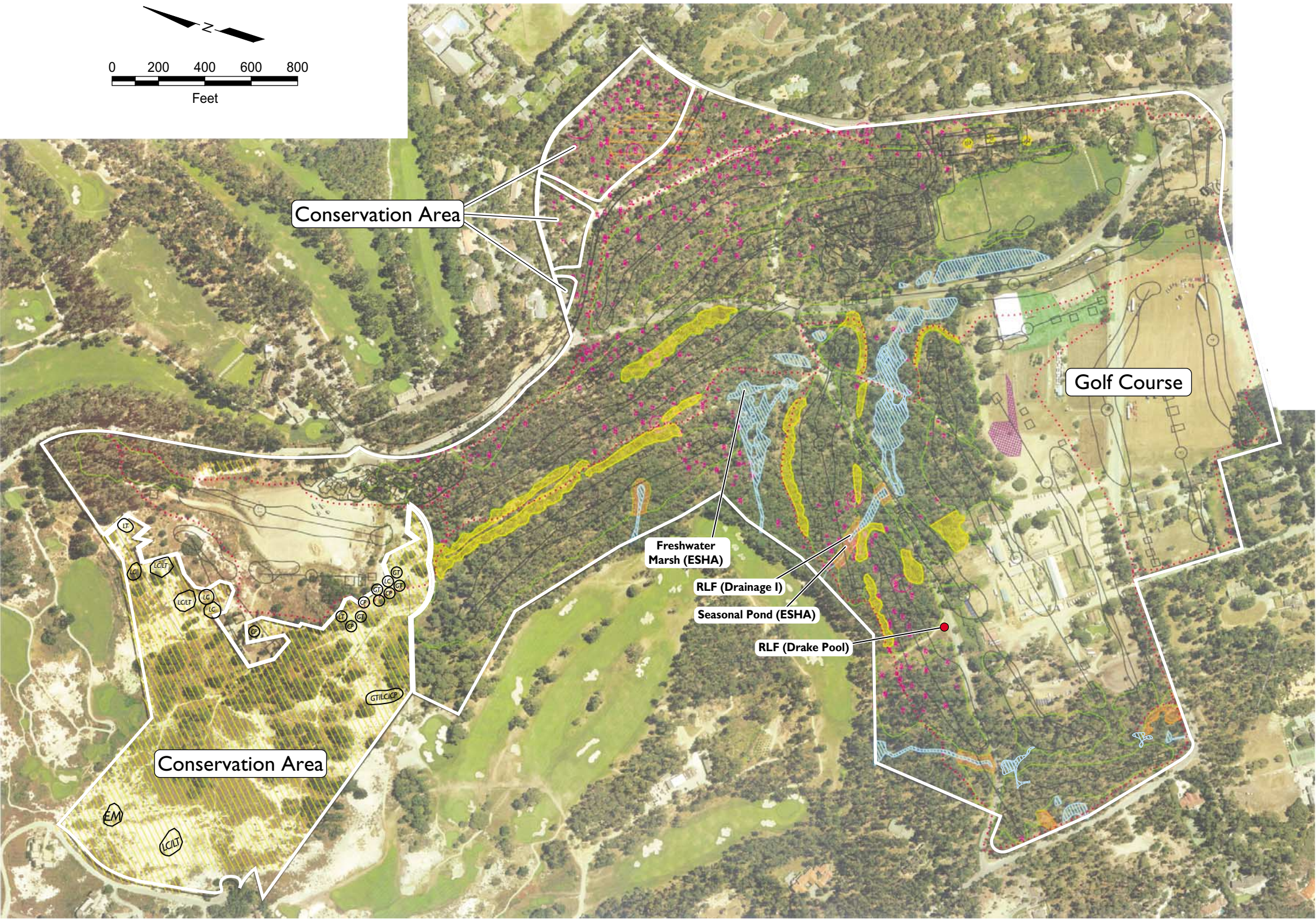


Figure E-9  
New Golf Course –  
Biological Resources and  
Disturbance Areas



**LEGEND**

- WETLAND AREA \*
- REMNANT DUNE AREA \*\*
- LOW DENSITY HOOKER'S MANZANITA\*\*
- PACIFIC GROVE CLOVER \*\*
- EXISTING DRAINAGE CREEK \*
- MONTEREY SPINE FLOWER \*\*
- TIDESTROM'S LUPINE \*\*
- BEACH LAYIA \*\*
- SAND GLIA \*\*
- MENZIE'S WALLFLOWER \*\*

- YADON'S PIPERIA \*\*
- HICKMAN'S ONION \*\*

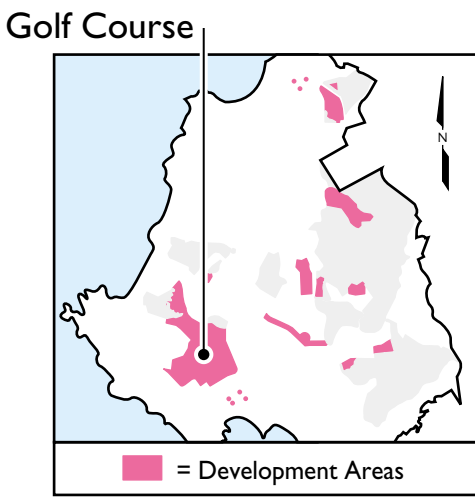
- CALIFORNIA RED-LEGGED FROG OBSERVATION \*\*\*

- NEW DISTURBANCE AREA
- UNDERSTORY CLEARING (NO GRADING)
- SELECTIVE CLEARING (NO GRADING)
- NEW GOLF MAINTENANCE TRAIL

\* FROM WETLANDS RESEARCH ASSOCIATES REPORT DATED JULY 2001; UPDATED WITH INFORMATION IN ECOSYNTHESIS, MAY 2003

\*\* FROM SPECIAL STATUS SPECIES REPORT, ZANDER ASSOCIATES, DATED JULY 2001

\*\*\* FROM WETLANDS RESEARCH ASSOCIATES REPORTS DATED OCTOBER AND NOVEMBER 2002



Sources: Base map © Pebble Beach Company, 2002. Used with Permission.