

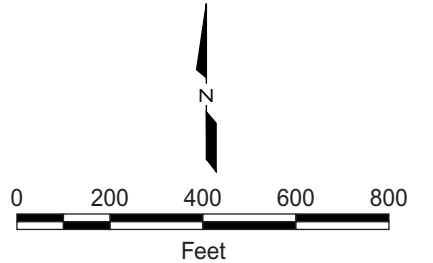
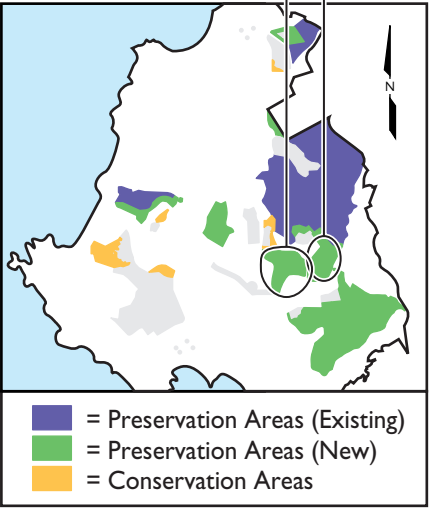
Figure E-18
Corporation Yard,
Preservation Area G and H, and
South Part of Huckleberry Hill –
Biological Resources

Legend

- YADON'S PIPERIA
- HOOKER'S MANZANITA (HIGH DENSITY)
- HOOKER'S MANZANITA (MEDIUM DENSITY)
- HOOKER'S MANZANITA (LOW DENSITY)
- HICKMAN'S ONION
- WETLAND AREAS
- MONTEREY CLOVER
- CREEKS / DRAINAGES
(Source: Wetland Research Associates 2001)
- GOWEN CYPRESS (APPROXIMATE)
(Source: Jones & Stokes 1996)
- HUCKLEBERRY HILL NATURAL AREA (APPROXIMATE BOUNDARY)
(Source: Del Monte Forest Land Use Plan, Monterey County 1984)
- S.F.B.MORSE BOTANICAL PRESERVE (APPROXIMATE BOUNDARY)
(Source: Del Monte Forest Land Use Plan, Monterey County 1984)
- CALIFORNIA RED-LEGGED FROG HABITAT *** FROM WETLANDS RESEARCH ASSOCIATES REPORTS DATED OCTOBER AND NOVEMBER 2002

NOTE: RED-LEGGED FROG WAS NOT FOUND AT THE PONDS, BUT THE SURVEY WAS INCONCLUSIVE AT THE DETENTION BASIN DUE TO THICK VEGETATION.

Area H **Area G**



Source: Base map © Pebble Beach Company, 2002. Used with permission.