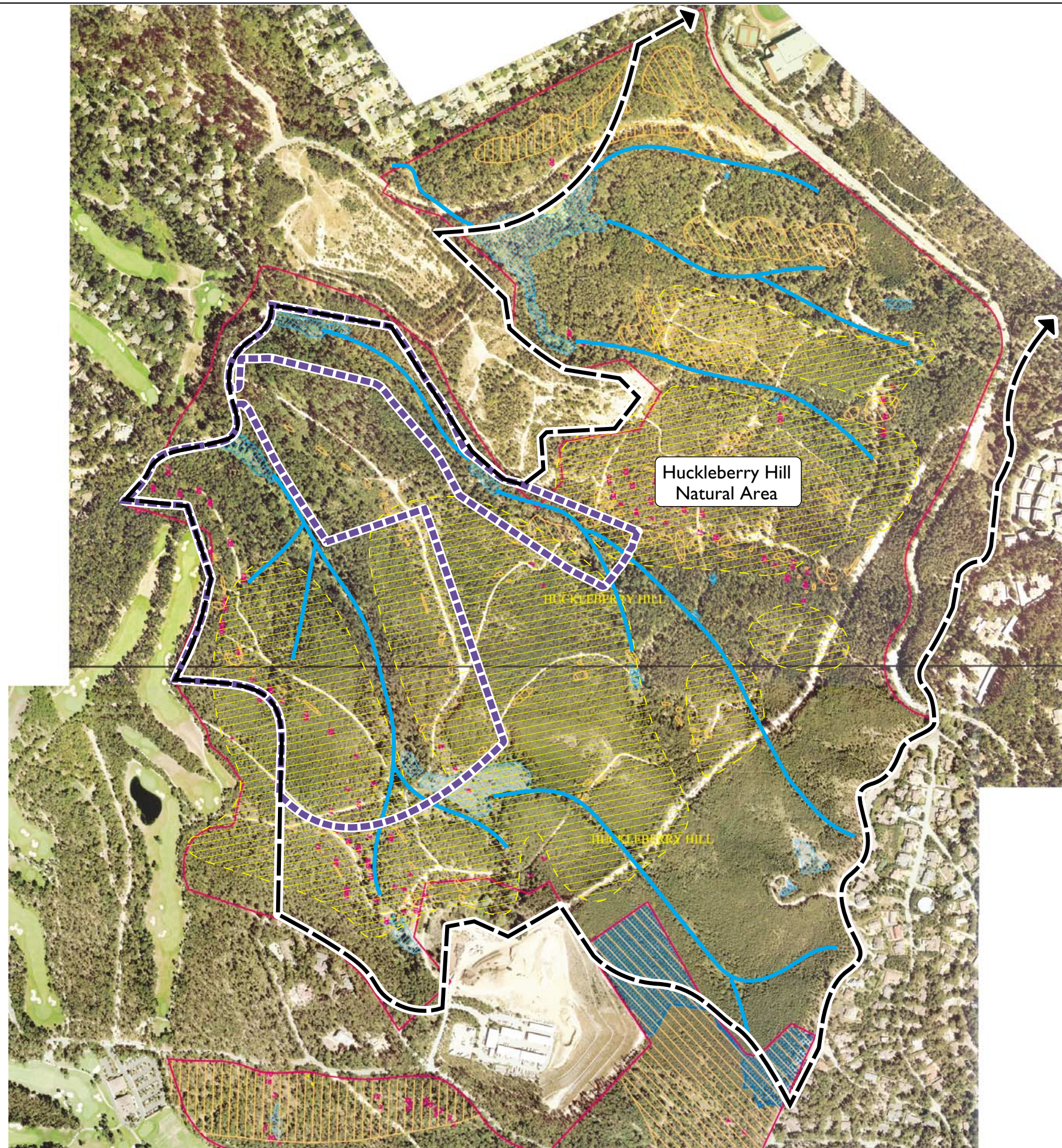


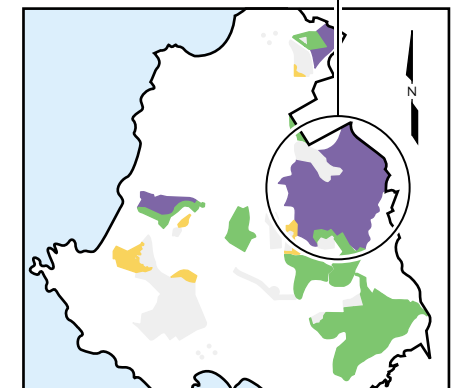
Figure E-23
Huckleberry Hill Natural Area –
Biological Resources



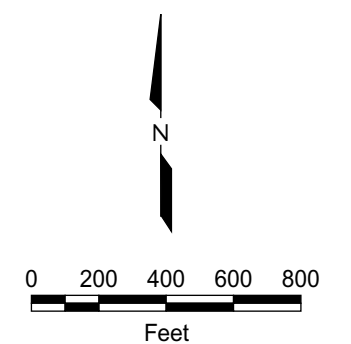
Legend

- 230 YADON'S PIPERIA
- HOOKER'S MANZANITA (HIGH DENSITY)
- HOOKER'S MANZANITA (MEDIUM DENSITY)
- HOOKER'S MANZANITA (LOW DENSITY)
- WETLAND AREAS
- CREEKS / DRAINAGES
(Source: Wetland Research Associates 2001)
- GOWEN CYPRESS (APPROXIMATE)
(Source: Jones & Stokes 1996)
- HUCKLEBERRY HILL NATURAL AREA (APPROXIMATE BOUNDARY)
(Source: Del Monte Forest Land Use Plan, Monterey County 1984))
- S.F.B.MORSE BOTANICAL PRESERVE (APPROXIMATE BOUNDARY)
(Source: Del Monte Forest Land Use Plan, Monterey County 1984))

Huckleberry Hill
Natural Area



- = Preservation Areas (Existing)
- = Preservation Areas (New)
- = Conservation Areas



Source: Base map © Pebble Beach Company, 2002.
 Used with Permission.