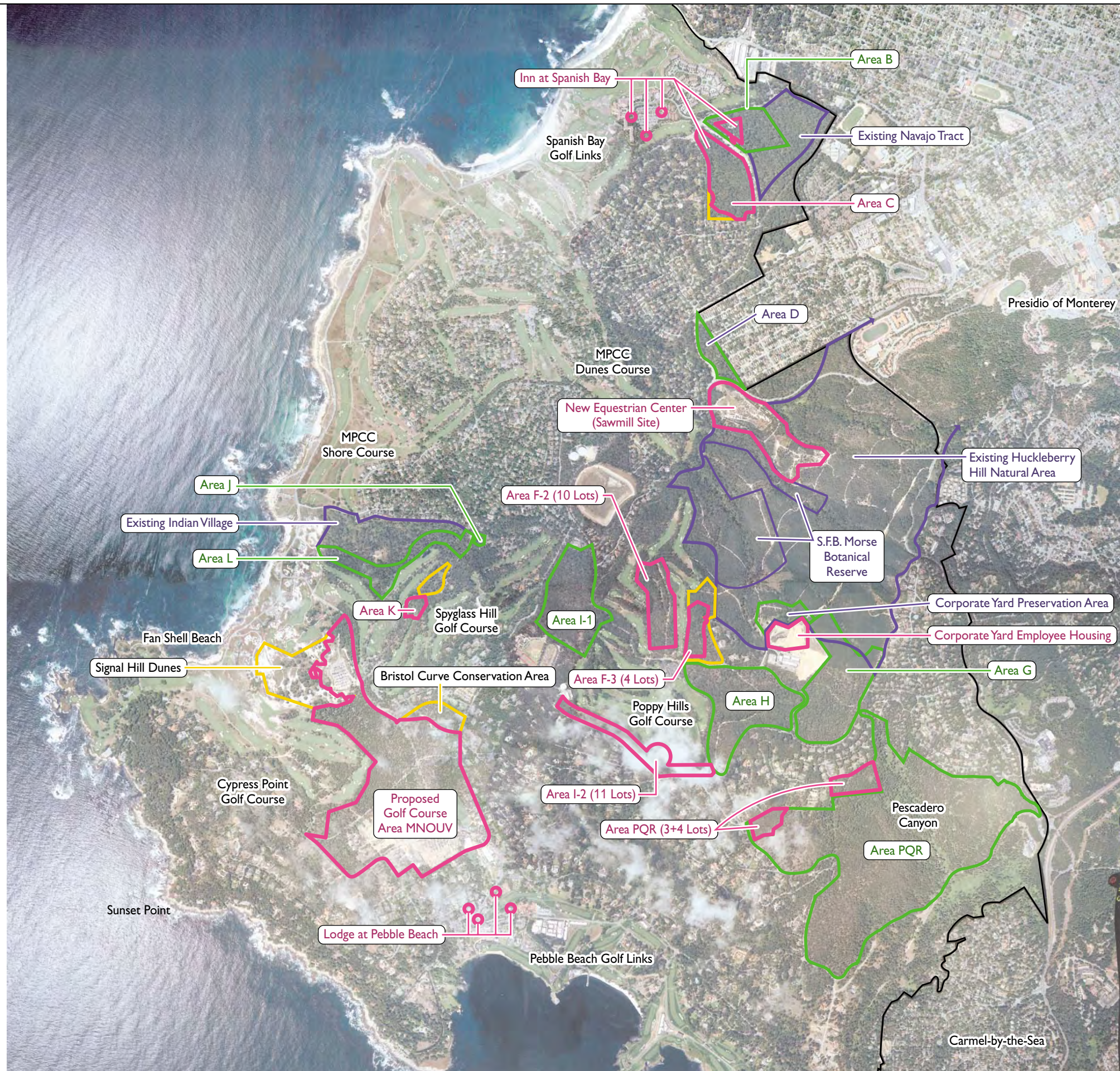


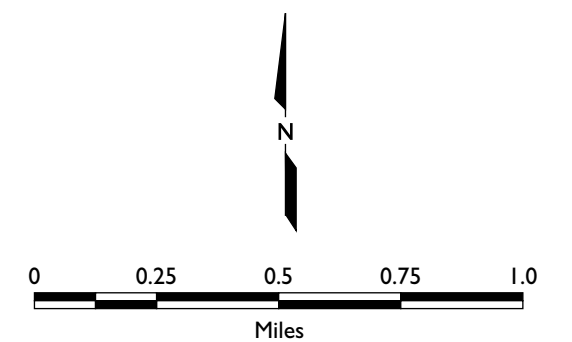
Figure ES-2
Development and Preservation Areas



LEGEND

- Development Areas
- Preservation Areas (Existing)
- Preservation Areas (New)
- Conservation Areas
- Del Monte Forest Boundary

Note: Pebble Beach Company has proposed several other Conservation Areas for resource protection and management on the Proposed Golf Course, Spanish Bay Driving Range (Area C), and the new Equestrian Center. These areas are not shown on this figure but are identified and discussed in the text.



Source: Base aerial © Pebble Beach Company, 2002.
Used with Permission. Development and preservation areas redrawn by Jones & Stokes.